

Appendix 1: Pictures of Earth-Sheltered Homes

<p>A most beautiful bermed earth-sheltered home with a stone exterior. The earth berm can be seen on the roof. Imagine mowing the lawn on top of your house? The large windowpanes are likely made of wood or steel. Note the small round window near the center of the picture. This house is certain to get a lot of indoor light.</p>		<p style="text-align: center;">http://www.earthshelteredtech.com/photo-n.htm</p>
<p>This ESH has four very large windows near the front. What appears to be an ordinary brown roof is actually an earth berm.</p>		<p style="text-align: center;">http://www.earthshelteredtech.com/photo-t.htm</p>
<p>A bermed or hillside ESH in winter—see how the large window faces the sun? This provides more than enough warmth (even into the night) to dramatically reduce or eliminate heating costs.</p>		<p style="text-align: center;">http://www.earthshelteredtech.com/photo-k.htm</p>
<p>A bermed ESH—the earth berm can be seen at the top and right side of the home. Note the three large windows in front. The front door is next to the central window.</p>		<p style="text-align: center;">http://www.earthshelteredtech.com/photo-h.htm</p>
<p>A rather plain earth-sheltered home with cream stucco or concrete exterior. This home lacks the modern design or fancifulness of most ESHs, but looks very much like homes one might find in Southwestern cities. It's difficult to see the earth berm on the roof (it's the narrow brown or green strip at the very top of the roof).</p>		<p style="text-align: center;">http://www.earthshelteredtech.com/photo-l.htm</p>

<p>A hillside ESH—this one appears to be set into the side of a hill. Look at all the sun shining on this home! There is probably a spectacular view from the windows.</p>		<p>http://www.earthshelteredtech.com/photo-s.htm</p>
<p>A rather modest earth-sheltered home. This one is unique in that it is built on flat land, but being insulated by a thick layer of concrete and earth gives it the same insulation value as bermed or hillside ESHs with more earth coverage. There's also an above-ground swimming pool (blue) in front.</p>		<p>http://www.earthshelteredtech.com/photo-m.htm</p>
<p>An ESH with white concrete exterior (not the type of concrete found on driveways). Note the curved architecture, large windows, and modern design.</p>		<p>http://www.earthshelteredtech.com/photo-g.htm</p>
<p>The curved cathedral-like roof of an earth-sheltered home is being poured in one continuous thick layer here. Earth Sheltered Technology is the first and only company to build ESHs with “monolithic” concrete roofs (instead of roofs made of many separate blocks of concrete).</p>		<p>http://www.earthshelteredtech.com/photo-const.htm</p>
<p>A Stieger center-pivot tractor with a Carry-All behind it and two crawler tractors parked on top of this home, plus all of the earth used to cover the structure. This really demonstrates the strength of an earth-sheltered home.</p>		<p>http://www.earthshelteredtech.com/steiger.htm</p>

This is a very nice ESH in Wichita, KS. It looks much like a typical above-ground home, except that the back (not visible) end is completely earth-bermed. It is a “2100 sq ft house on a 77 foot wide city lot.” This shows that ESHs do not need to be built in open, secluded areas. An ESH can be built anywhere.



<http://www.formworksbuilding.com/Wichita.html>

An ESH in Prescott, Arizona. This home has a very distinctive design; the front door is at lower left, and a series of steps leads from ground level up to the roof of the house, where a small gazebo stands. The view must be amazing from the roof—notice the mountains! Although ESHs are usually known for their heat-insulating capabilities, a better term to use might be “temperature-conserving”—such a home protects against the wide temperature fluctuations likely found in a desert environment.



<http://www.formworksbuilding.com/Prescott1AZ.html>

This home in Telluride, CO is completely earth-sheltered except for the brick face shown here. A single person owns this home, and says that the home can be left “unattended and unheated all year without concern.”



<http://www.formworksbuilding.com/TellurideCO.html>

This less-recently built earth-sheltered home in Tempe, AZ belongs to a university professor.



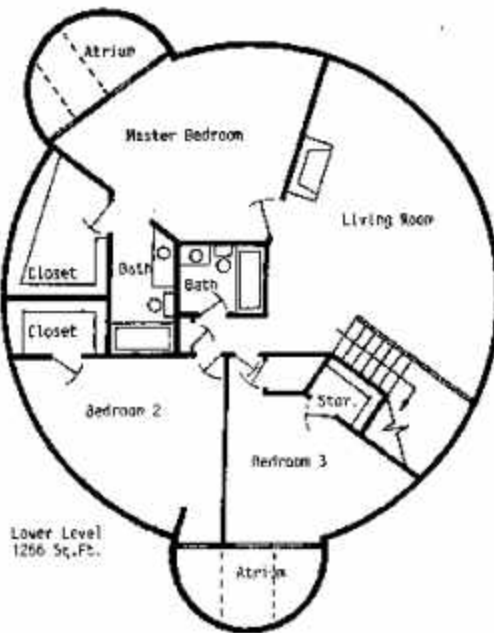
<http://www.formworksbuilding.com/TempeAZ.html>

<p>The house in Aguanga, CA owned by Claire Clair, mentioned in this paper</p>		<p>http://www.formworksbuilding.com/Aguanga.html</p>
<p>Living with nature, not against it; notice how this home blends in with the natural surroundings.</p>		<p>http://www.againglass.com/again-glass/earhous.html</p>
<p>“Passive Annual Heat Storage” earth-sheltered home in Montana, built in 1980-81. Indoor temperatures never drop below 66°F in winter, even without any form of heating besides passive solar heating.</p>		<p>http://www.rmrc.org/dome1.htm</p>
<p>Side view of the above home, showing how much sunlight is available for passive solar heating</p>		<p>http://www.rmrc.org/dome1.htm</p>

Appendix 2: A Sampling of the Wide Variety of ESH Floor Plans

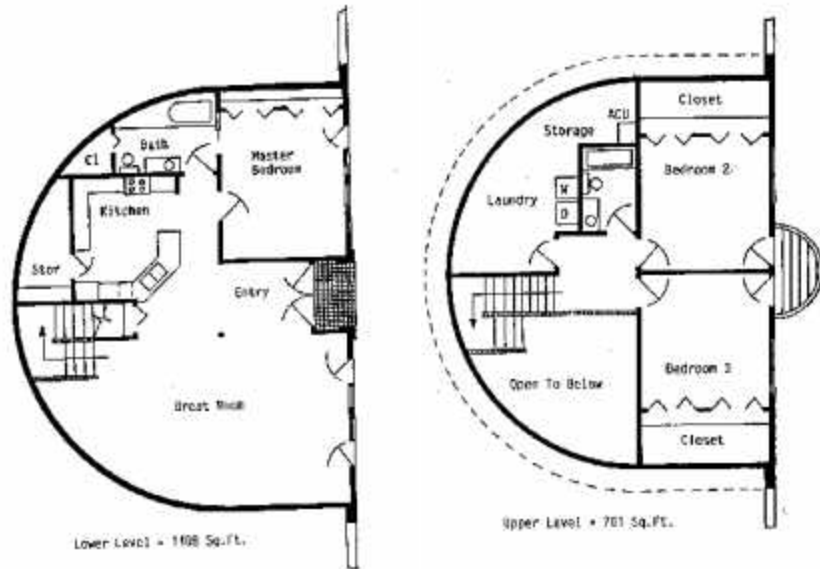
Earth-sheltered home with rounded exterior. This is a good design for bermed homes.

<http://www.earthshelter.com/page7.html>

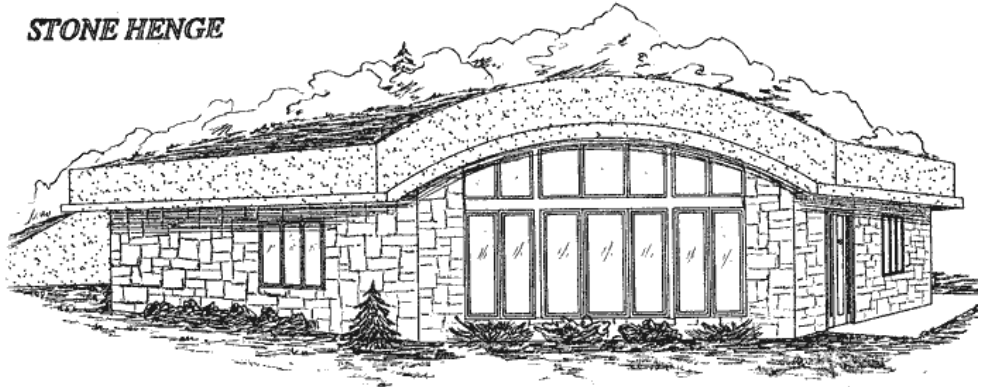


A two-story hemisphere-shaped earth-sheltered home. Note that the entrance to the home is at the right of the pictures; the front of the home is perfectly flat, but the interior walls are rounded.

<http://www.earthshelter.com/page7.html>

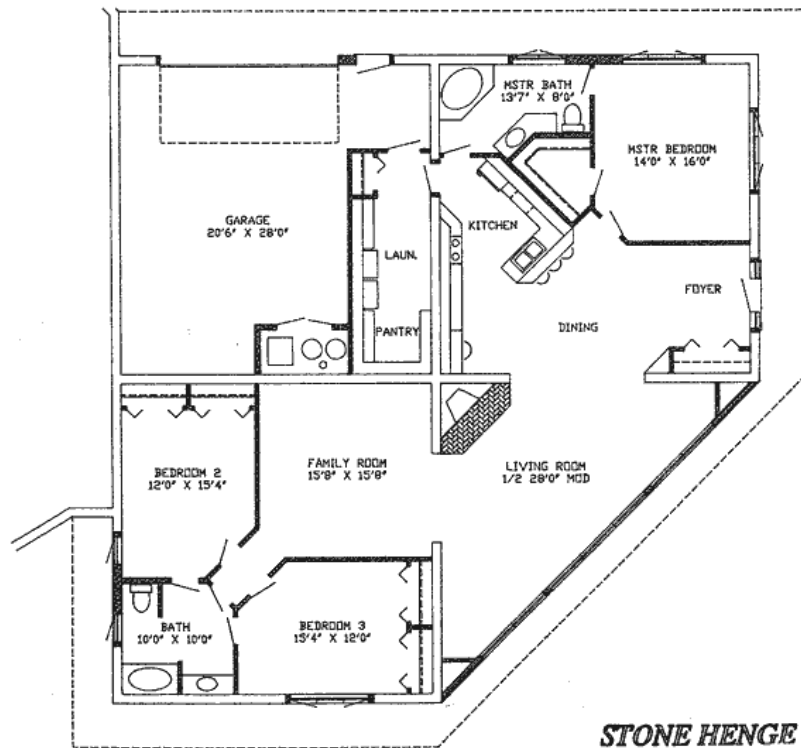


STONE HENGE



Notice the distinctive spacious living room layout at bottom right. The windows seen in the top picture are along the bottom right edge of the living room. This is a 3075 sq. ft 3-bedroom home with 2 baths and a large family room.

<http://www.earthshelteredtech.com/plan-sh.htm>



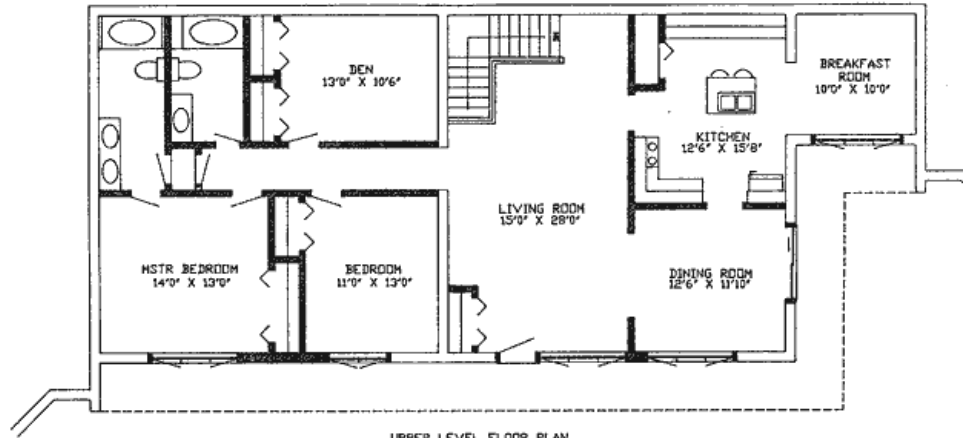
STONE HENGE

RIVERVIEW

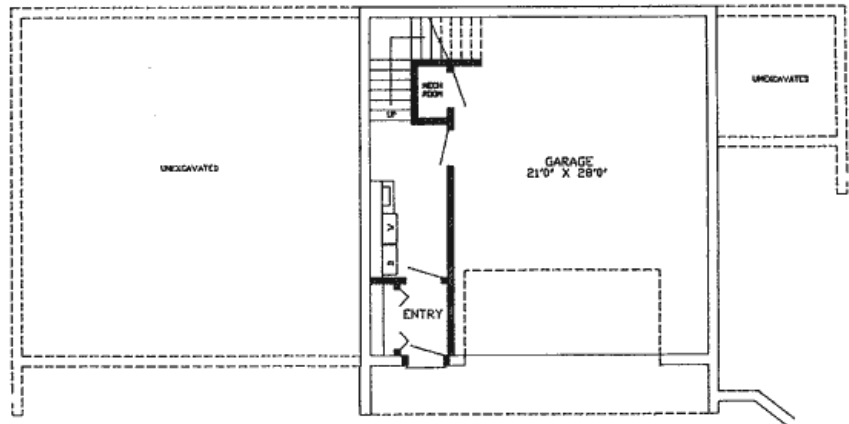


This is a 2-story hillside earth-sheltered home. Notice the garage at center in the top diagram, and the staircase just to the left that joins the bottom level to the main living level of the home. This home does not have curved walls, but it is still spacious, at a size of 2790 sq ft.

<http://www.earthshelteredtech.com/plan-rv.htm>



UPPER LEVEL FLOOR PLAN



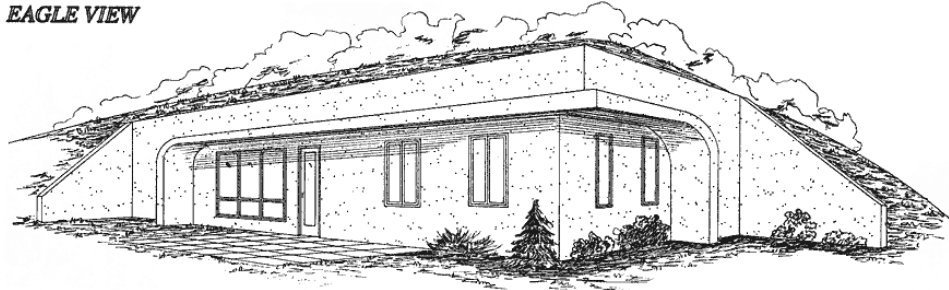
LOWER LEVEL FLOOR PLAN

RIVERVIEW

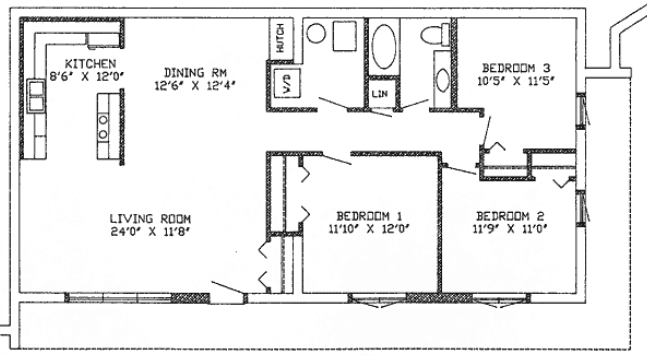
This 1325 sq ft bermed home has plenty of space for up to three people, but only takes about \$96,000 to build. Notice the complete covering of almost three sides of the home, and the thick concrete wall separating the home's interior from the exterior.

<http://www.earthshelteredtech.com/plan-ev.htm>

EAGLE VIEW



EAGLE VIEW



Appendix 3: Pricing of Representative Earth-Sheltered Homes*

Plan Name	Square Footage	Basic Structure Total Cost	Estimated Finished Cost	Estimated Cost per Square Foot Finished
Eagle View	1325	\$56,120.00	\$95,500.00	\$72.07
Meadowbrook	1750	\$72,315.00	\$120,525.00	\$68.87
Eastport	1805	\$68,845.00	\$114,750.00	\$63.57
Evergreen Ridge	1955	\$76,025.00	\$126,700.00	\$64.80
Wedgewood	2075	\$79,245.00	\$132,100.00	\$63.66
The Executive	2640	\$96,455.00	\$155,750.00	\$58.99
Riverview	2790	\$98,485.00	\$159,100.00	\$57.02
Royal Oak	2750	\$107,035.00	\$173,300.00	\$63.00
Stone Henge	3075	\$116,790.00	\$189,650.00	\$61.67
Cedar Haven	3290	\$118,000.00	\$191,500.00	\$58.20

From Earth Sheltered Technology
<http://www.earthshelteredtech.com/pricing-110.htm>

*All pricing information is dated 1/2/99, and although reliable then, is subject to change.

Copyright statement: "Please feel free to modify, mark up, or cut apart any of the plans on our website and design your own floor plan using part and parcel of those enclosed."

Appendices on Earth-Sheltered Home Designs

These appendices were created in response to audience demand. Since many people do not know what earth-sheltered homes really look like or where they are located, these photo and blueprint appendices will help the audience get an idea of their design.

The printer ran out of black ink; please excuse the lines that appear whenever a dark color is needed. In most of these cases, there are actually trees or very dark soil in these lined areas. For better viewing, the web source of each image is provided. Read Appendix 3 for the copyright statement belonging to most of the photos shown in these appendices.

Appendix 1 <u>Pictures of Earth-Sheltered Homes</u>	page i
Appendix 2 <u>A Sampling of the Wide Variety of ESH Floor Plans</u>	page v
Appendix 3 <u>Pricing of Representative Earth-Sheltered Homes</u>	page viii